

The Duke of Kent's Waltz

Violine 1

Violine 2

Basso

This block contains the first four measures of the musical score for Violine 1, Violine 2, and Basso. The key signature is one sharp (F#) and the time signature is 3/4. Violine 1 plays a melody with eighth and quarter notes, featuring a slur over measures 3 and 4. Violine 2 and Basso provide harmonic support with quarter and half notes.

5

Tanz. 3 x spielen

This block contains measures 5 through 8 of the musical score. It is marked 'Tanz. 3 x spielen' (Dance, play 3 times). The notation continues with the same instruments and key signature, maintaining the waltz rhythm.

9

1.

2.

This block contains measures 9 through 12. Measures 9-11 lead into a first ending (marked '1.') which concludes with a repeat sign. A second ending (marked '2.') follows, providing an alternative conclusion to the piece. The notation includes various note values and rests typical of a waltz.

13



System 13-17: This system contains five measures of music. The key signature has one sharp (F#). The melody in the treble clef consists of eighth and quarter notes, starting with a quarter rest. The right-hand accompaniment in the treble clef features a steady eighth-note pattern. The bass clef provides a simple harmonic foundation with half and quarter notes.

18



System 18-22: This system contains five measures of music. The melody continues with eighth and quarter notes, including a sharp sign in the fifth measure. The right-hand accompaniment shows more variation with some notes beamed together. The bass clef continues with a simple harmonic line.

23

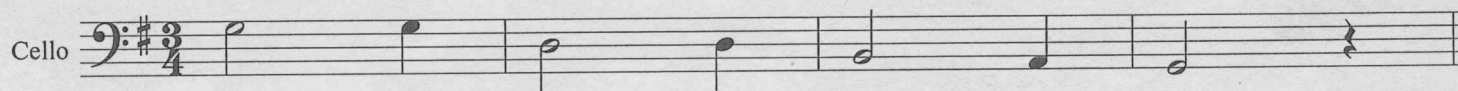


System 23-27: This system contains five measures of music, ending with a double bar line. The melody features a half note with a fermata in the first measure, followed by quarter and eighth notes. The right-hand accompaniment includes some rests and eighth-note patterns. The bass clef continues with a simple harmonic line.

The Duke of Kent's Waltz - Cellostimme

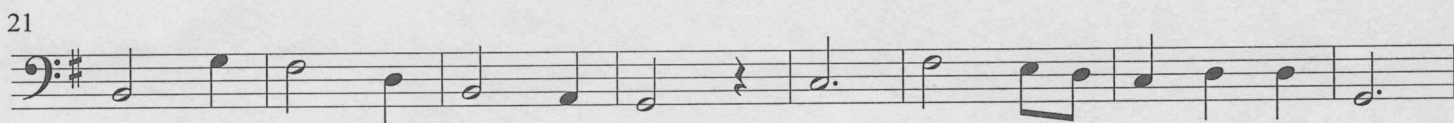
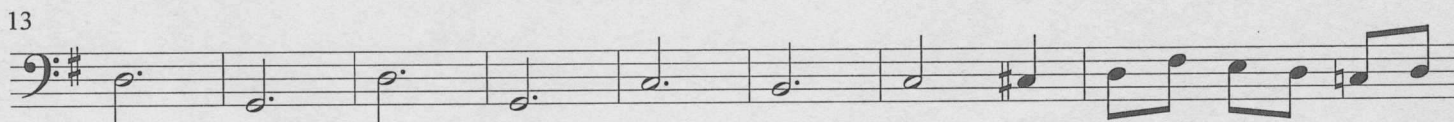
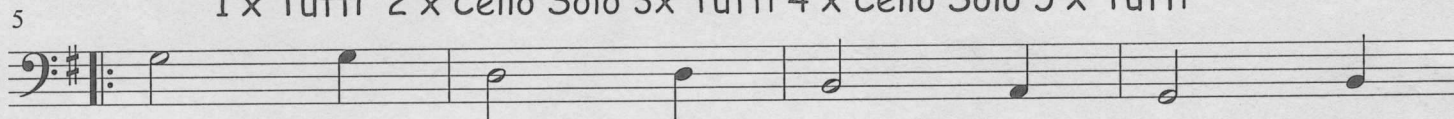
Anfangsreverenz Tutti

$\text{♩} = 138$



Tanz = 5 x spielen

1 x Tutti 2 x Cello Solo 3x Tutti 4 x Cello Solo 5 x Tutti



Duke of Kent's Waltz

d = 138

Guitar

A handwritten guitar score for the piece "Duke of Kent's Waltz". The score is written on five staves, each beginning with a treble clef and a key signature of one sharp (F#). The notation is a form of guitar shorthand, using vertical stems, dots for fret positions, and various symbols for chords and articulation. The first staff includes a "3" and a "4" at the beginning, possibly indicating fingerings or a specific chord. The second staff has a sharp sign (#) at the start. The fourth staff features a large "2" and a "7" symbol. The fifth staff ends with a double bar line and repeat dots. The tempo is indicated as "d = 138" in the top right corner.